



TrendReader Express Software

For JR-1000/1001, Nautilus85/135, and TRH-1000 Data Loggers

TrendReader Express is an enhanced software package designed exclusively for the JR-1000/1001, Nautilus85/135 and TRH-1000 data loggers. This easy-to-use software incorporates the advantages of simple functionality with advanced features that are normally associated with more expensive data acquisition software.

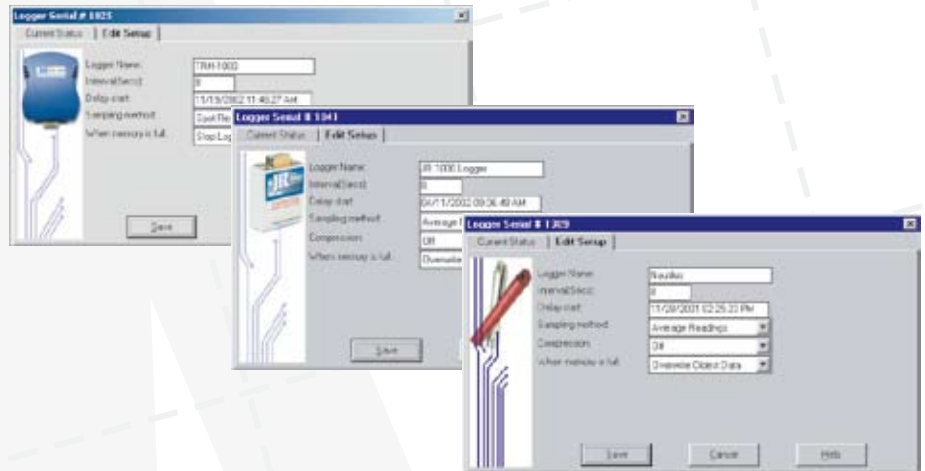


DOWNLOADING AND COMMUNICATING WITH DATA LOGGER

Downloading and communicating with the JR-1000/1001 or TRH-1000 could not be more simple; Simply plug the logger directly into the serial port of your computer. Or by using the available serial to USB adapter, connect the logger to an available USB port. To connect the Nautilus 85/135, use ACR's IC-102 USB or IC-101 serial cable. Once the logger is connected, load the software. No tools, cards or docking stations are required.

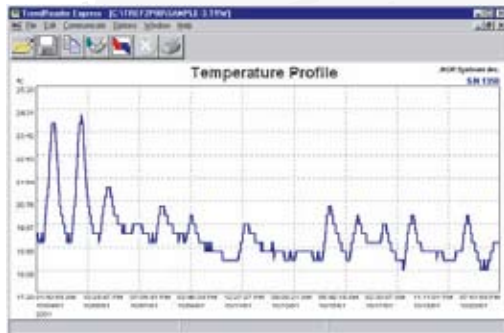
SETTING UP DATA LOGGER

Configure the data logger in the Edit Setup tab of the status window. Set your sample rate, mode and method, change the name of the logger, and activate the start delay. All of this allows for a fast and easy logger setup.



FEATURES

- Quick and simple communications
- Fast and easy logger setup
- Presentation-quality graphs
- Zooming capabilities
- Export capabilities



VIEWING AND EXPORTING DATA

Data can be viewed in a graphical format with TrendReader Express. With the graph displayed on the screen, you can zoom in to see more details or you can print the graph to any Windows compatible printer. Use the export function to export your data to other programs for further analysis. Data can be exported in ASCII or CSV formats.

TrendReader Express Software is compatible with Windows 2000, XP & Vista 32 bit



**ELECTRONICA INDUSTRIAL
AUTOMATIZACION
CONTROL
INSTRUMENTACION**

TBM S.R.L. - Maipú 2420 - 2000 - ROSARIO - ARGENTINA
TEL. 0341 481 9757 - FAX 0341 481 3546
E - MAIL : t b m @ t b m . c o m . a r